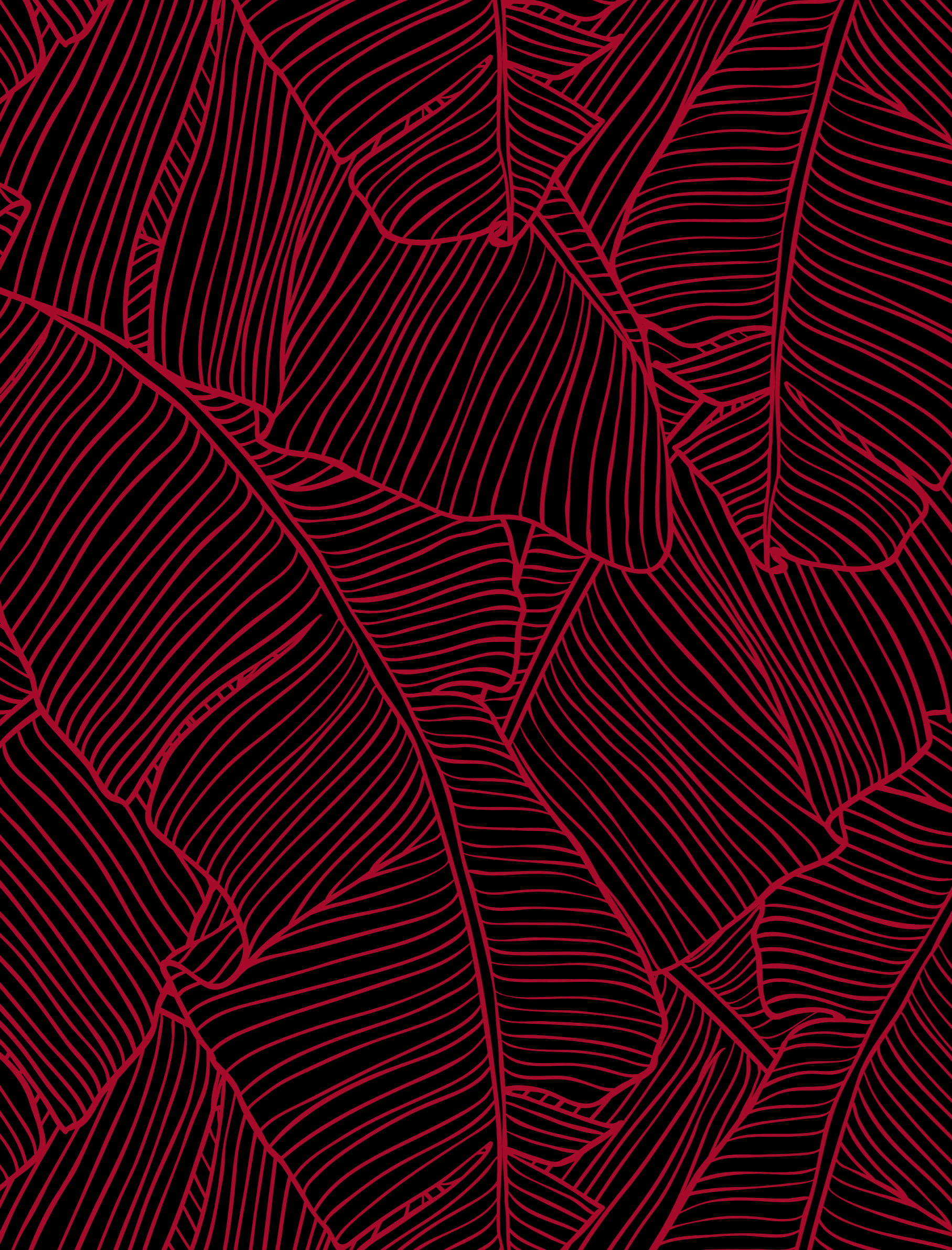




the **FOUNDING**

CANADAWATER



Welcome to The Founding

CANADA WATER'S NEW FLAGSHIP RESIDENCE

The first chapter in the remarkable Canada Water masterplan story promises to be its most exciting – 186 apartments are coming to the capital's most talked-about neighbourhood.

THE JOY OF THE UNEXPECTED

View of the City from The Founding.



the FOUNDING

16 NEW STREETS AND THE FIRST NEW HIGH STREET IN LONDON FOR A GENERATION

12 ACRES OF NEW PUBLIC SPACES, INCLUDING A TOWN SQUARE THE SIZE OF LEICESTER SQUARE

1 MILLION SQ FT OF NEW RESTAURANTS, BARS, RETAIL AND ENTERTAINMENT SPACE FOR THE COMMUNITY

2 MILLION SQ FT OF OFFICE SPACE

1,255 NEW TREES TO ENHANCE ONE OF LONDON'S GREENEST NEIGHBOURHOODS

3.8KM OF NEW STREETS AND SPACES FOR PEDESTRIANS AND CYCLISTS TO ENJOY

3,000* NEW HOMES WILL BE BUILT OVER A 10-15 YEAR PERIOD

*This figure is approximate.

05

MASTERPLAN PHASING

PHASE 1 COMPLETES 2024

- THE FOUNDING (186 HOMES)
- THREE DEAL PORTERS (120,000 SQ FT OF OFFICES WITH RETAIL AT GROUND FLOOR)
- THE DOCK SHED (180,000 SQ FT OF OFFICES WITH GROUND FLOOR RETAIL)
- NEW LEISURE CENTRE (SWIMMING POOL, GYM, SPORTS HALLS)
- ROBERTS CLOSE (79 HOMES)
- DOCK REJUVENATION AND BOARDWALK

PHASE 2 PHASED COMPLETION 2026-2027

- THE GRAND PRESS (160,000 SQ FT OF OFFICES WITH RETAIL AT GROUND FLOOR)
- PRINTWORKS LONDON (ICONIC CULTURAL VENUE)
- F2 (300,000 SQ FT OF OFFICES WITH RETAIL AT GROUND FLOOR AND C.175 HOMES)
- L ZONE (C.237 HOMES)
- PARK

PHASE 3 PHASED COMPLETION 2027-2028

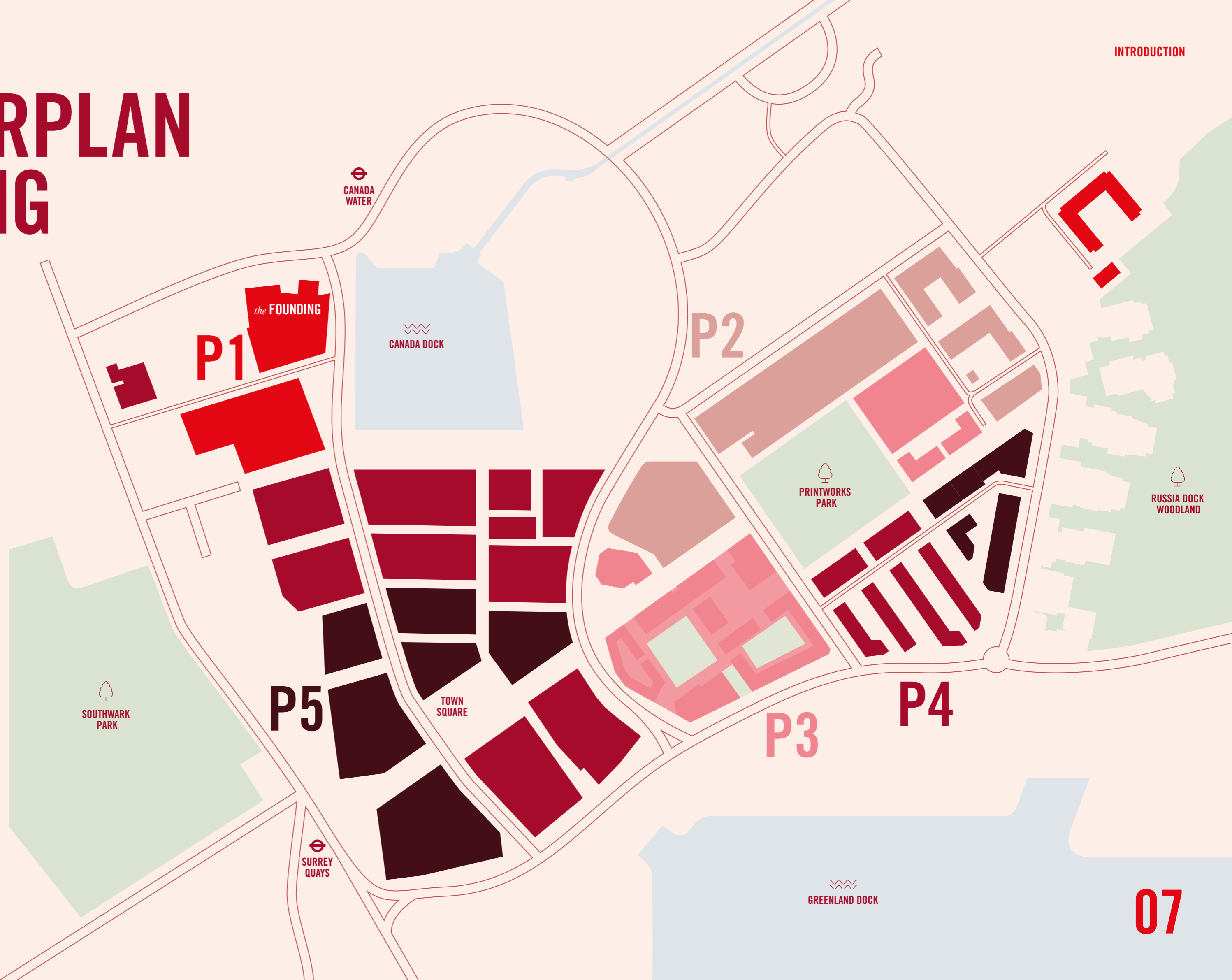
- PLOT G (TESCO C.400 HOMES)
- F1 (C.235 HOMES)

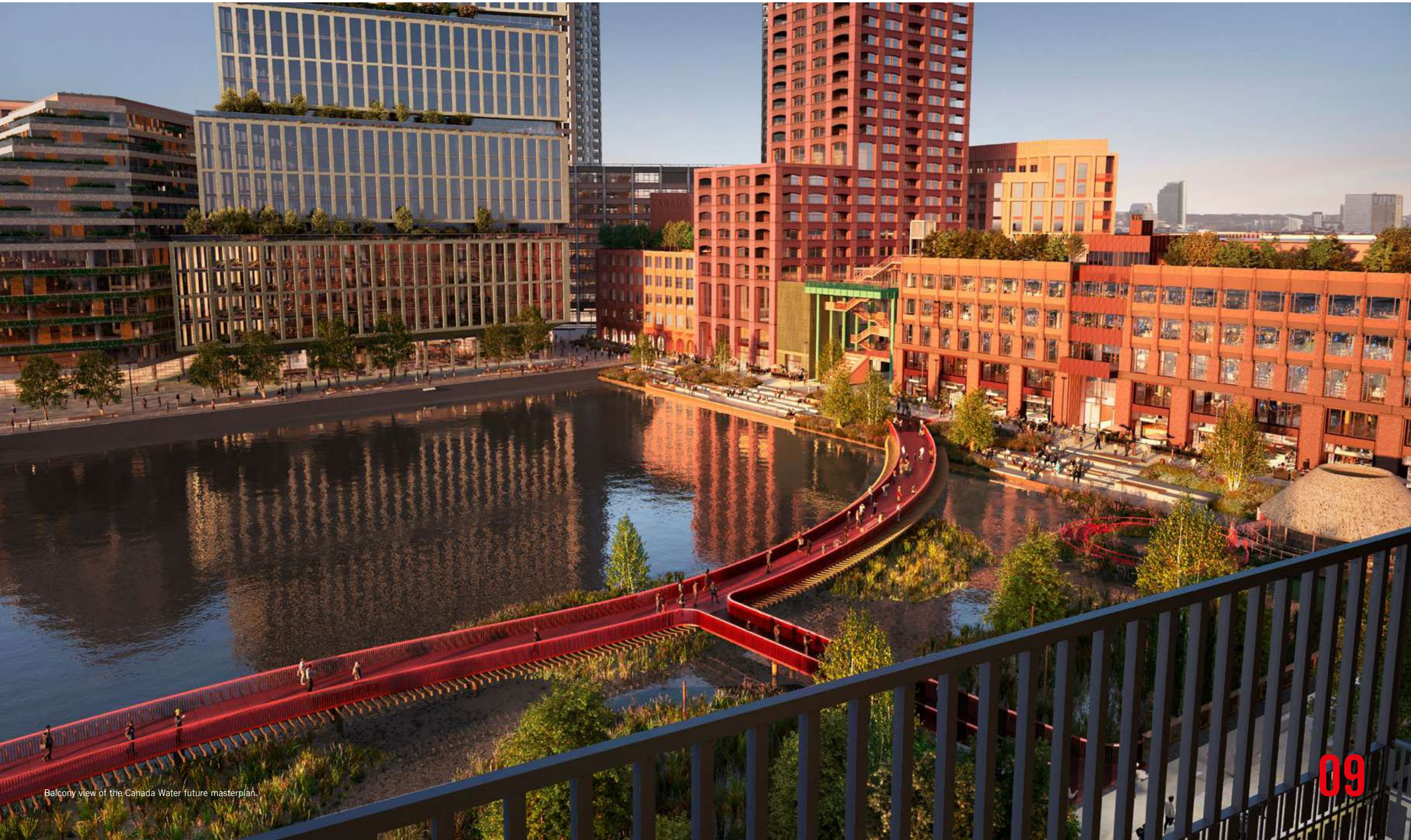
PHASE 4 PHASED COMPLETION 2028-2029

- INCLUDES HOMES, OFFICES, RETAIL AND ENTERTAINMENT

PHASE 5 PHASED COMPLETION 2028-2031

- TOWN SQUARE
- INCLUDES HOMES, OFFICES, RETAIL AND ENTERTAINMENT





Balcony view of the Canada Water future masterplan.



A NEW LANDMARK LEGACY

A new era of waterside living is coming to Canada Water. London's best-kept secret is about to be revealed: one of the largest multi-phase developments in Europe is transforming this historic dockland in South East London.

The Founding will be the first residential building in the Canada Water masterplan vision. Elevating your expectations, the 35-storey tower pays respect to the area's industrial heritage while welcoming in a new level of contemporary sophistication across its collection of studio, 1, 2 and 3 bedroom apartments. Interiors by Conran and Partners and panoramic views of London help to create a new legacy here.



The Founding entrance opposite
Canada Water Underground Station.



The Founding's entrance.

Stay connected

LIVE LOCAL



BE THERE FIRST

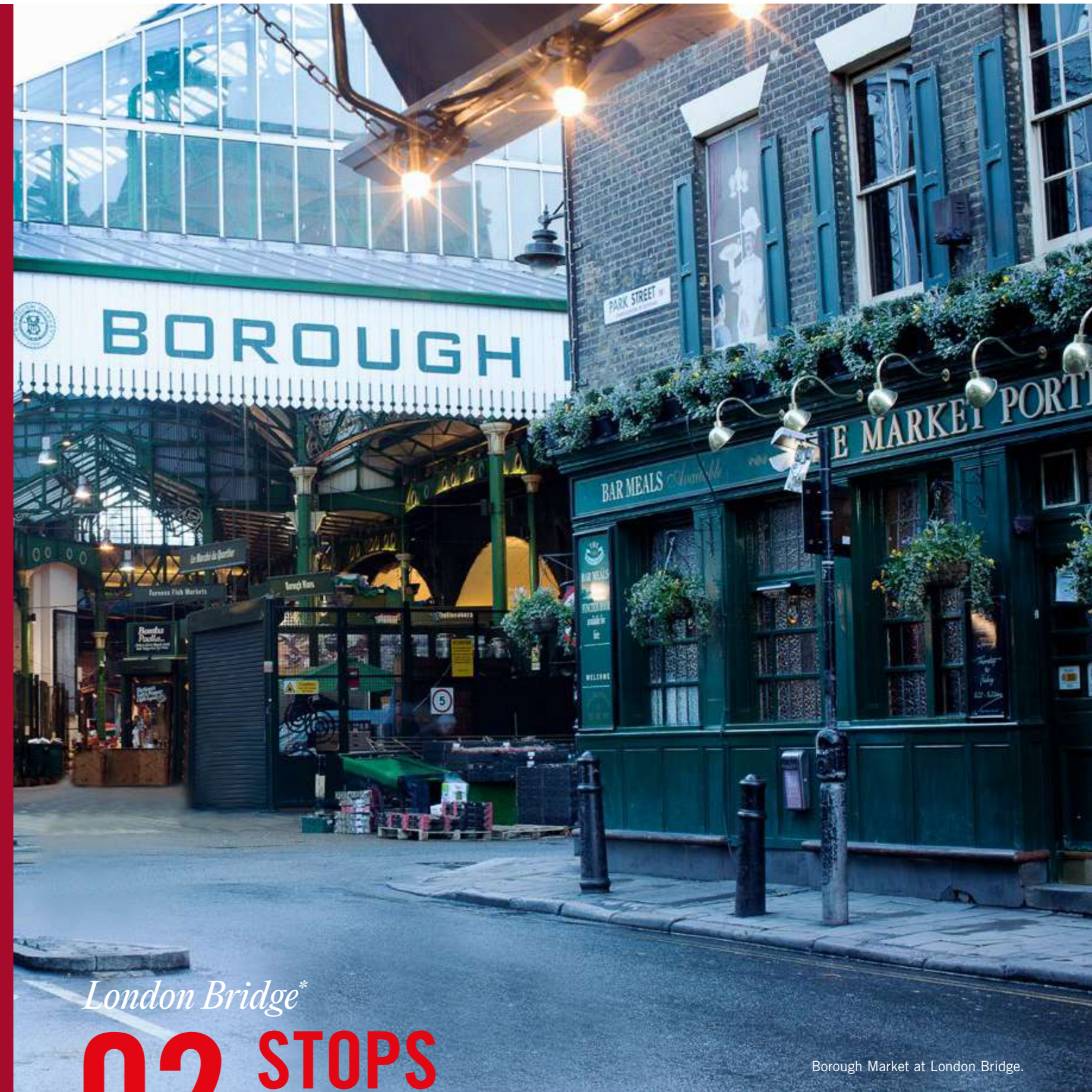
Canary Wharf*

01 STOP EAST



Jubilee Park at Canary Wharf.

*Canary Wharf is one stop east on the Jubilee Line. London Bridge is two stops west on the Jubilee Line.



London Bridge*

02 STOPS WEST

Borough Market at London Bridge.

*Bank**

03 STOPS WEST



Southbank Centre in Waterloo.

*Waterloo**

04 STOPS WEST



Bank of England.

*Shoreditch**

05 STOPS NORTH



Hoxton Square in Shoreditch.

*Bank is three stops west on the Jubilee and Northern Line.
Waterloo is four stops west on the Jubilee Line.
Shoreditch is five stops north on the Overground line.

One minute walk to Canada Water Station

CONNECT

Ships may no longer be the preferred method of transport in this historic part of London, but it's as committed to connecting people as ever. The Founding sits within easy reach of London's Underground including the Jubilee Line and the Overground. One stop away at Canary Wharf lies London's newest and most anticipated route – the Elizabeth Line, connecting you to Heathrow Airport and the West End in a matter of minutes.



■ JUBILEE LINE ■ NORTHERN LINE
■ ELIZABETH LINE ■ OVERGROUND LINE

Travel times are approximate and taken from TfL.

WORLD CLASS UNIVERSITIES ON YOUR DOORSTEP

 *TEDI-London*

SHORT WALK

 *South Bank University*

19 MINS

 *King's College London*

21 MINS

 *London School of Economics*

23 MINS

 *UCL*

24 MINS

Travel times are approximate and taken from TfL.

Experience life

AT CANADA WATER



A LEAFY PERSPECTIVE ON CITY LIVING

In the heart of the city, The Founding is the perfect place to build fresh memories. Surrounded by 130 acres of parks and woodlands, and the calming waters of Greenland Dock, it's a thriving natural environment that can be enjoyed by everyone.



View of the City from Stave Hill.



The new boardwalk and food and beverage offer at Canada Water.



View of the City from Stave Hill.

ZEN IN ZONE 2

Surrounded by landscaped gardens and 12 acres of new open spaces including a 3.5-acre park, you'll find more green space per head than anywhere else in central London.

The neighbourhood's iconic industrial past is still very much present in the waters of Greenland Dock, too. New cycle paths and an iconic boardwalk running along the western edge of the Canada Dock will make this a haven of blue and green at the heart of the city.



Greenland Dock.

AL FRESCO AT YOUR FEET



Retail, restaurants and green space at The Founding.

130 acres to explore

A BREATH OF FRESH AIR



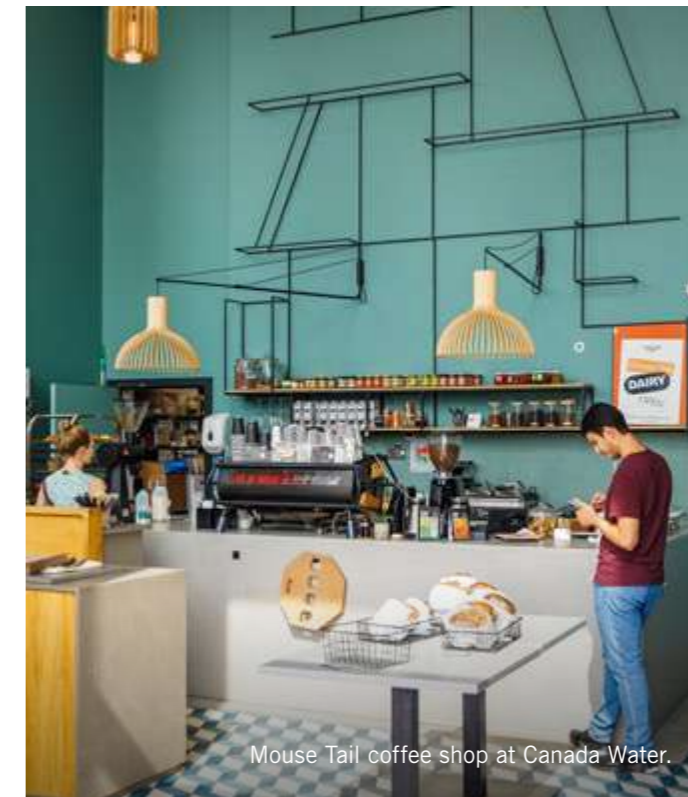
Canals in Canada Water.



Bandstand at Southwark Park.



Future retail and cafés at Canada Water.



Mouse Tail coffee shop at Canada Water.

**1 MILLION SQ FT
OF SHOPS, BARS,
RESTAURANTS
AND LEISURE.**

A CUT ABOVE THE REST

One million square feet of retail and leisure is coming to Canada Water, including an array of artisan and independent retailers that will be hand-selected for their excellence and originality. A stroll down The Cuts will be a destination of unexpected delights.



Future shopping lanes called The Cuts.

FOR THE LOVE OF THE INDEPENDENT

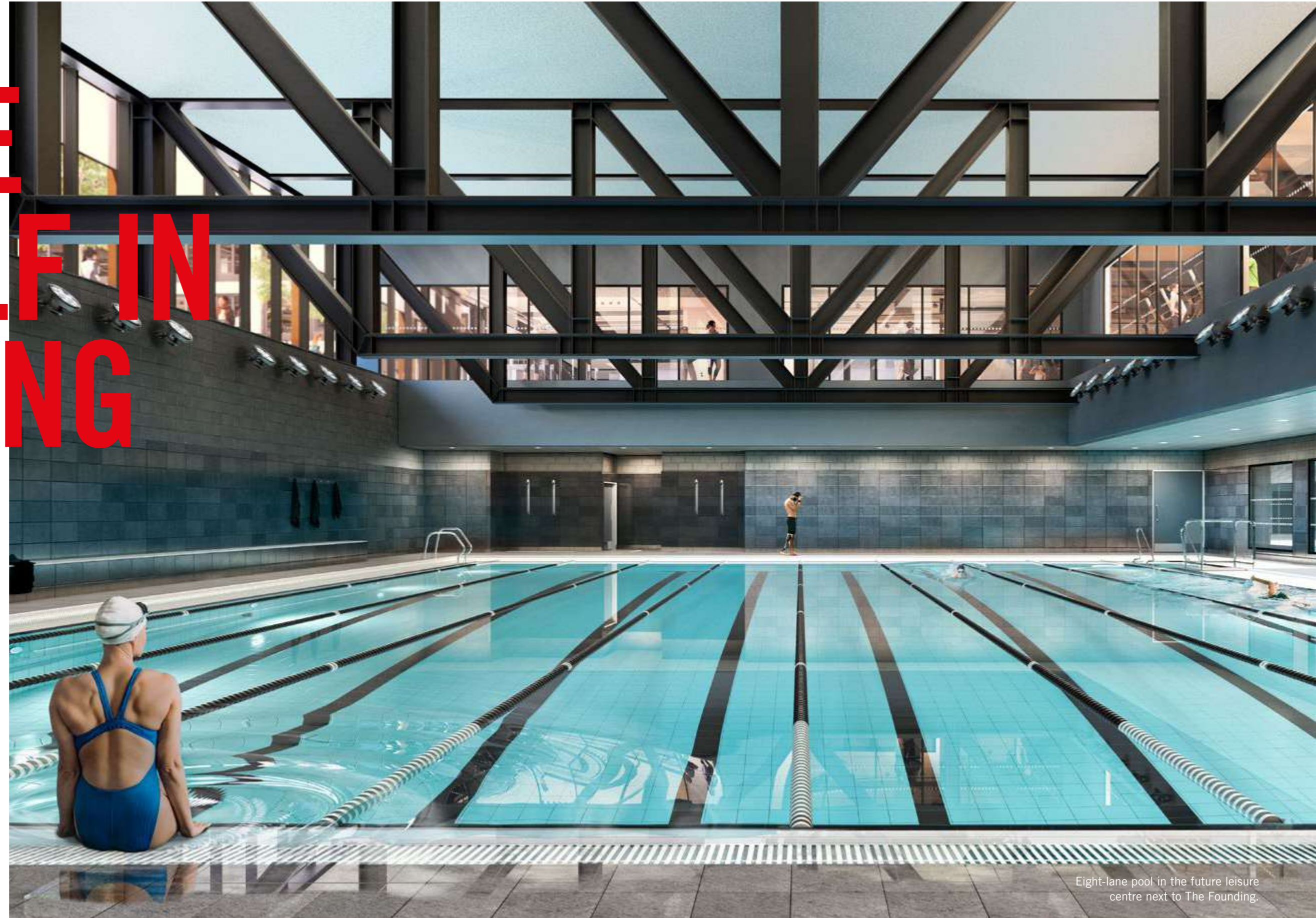
At ground floor level, The Founding will be home to a host of carefully curated small shops, delis, bars and restaurants that offer both everyday convenience and the out-of-the-ordinary. It will be a collection of like-minded small brands that will become second home to our residents and a destination for those visiting Canada Water.

Offering an authentic day to night scene, you'll be covered for your morning flat white, midweek dinner, through to weekend date nights. In warmer months, you'll experience al fresco dining as our ground floor eateries spill out onto the landscaped streetscape.



Future retail in Canada Water.

IMMERSE YOURSELF IN WELLBEING



The Founding prioritises your wellbeing with access to a first-class leisure centre located right next door. You can hit the state-of-the-art gym or racket courts, relax in the sauna or steam room, take a fitness class or dive into an eight-lane 25-metre swimming pool.

Eight-lane pool in the future leisure centre next to The Founding.



Evening event at Printworks London.



Ballet at Printworks London.

**A CULTURAL
HUB FROM
DAY TO NIGHT**

A NEW LEGEND IS BORN

At The Founding, you can live at the heart of a new generation of beautifully designed homes, surrounded by gorgeously landscaped gardens, new cycleways and the waters of both Canada Water Dock and Greenland Dock, echoing the neighbourhood's illustrious maritime past.

However, those looking for culture and creativity will play an important role in the evolution of Canada Water and no more so than at the home of Printworks London. You'll find inspiration around every corner of the building, where The Grand Press offers spectacular workspace with park views and sustainable, industrial design for Canada Water's businesses.



Your new apartment

THE FOUNDING



SEE THE CITY LIKE NEVER BEFORE

London's skyline takes centre stage at The Founding. Dual aspect apartments and panoramic views enable you to enjoy the city's most iconic landmarks from sunrise to sunset without even stepping out of the door. Conran and Partners have taken inspiration from surrounding nature to create a feeling of urban calm.





**THIS IS WHERE
YOU BELONG**





ROOM FOR THOUGHT

The epitome of urban luxury, The Founding's open-plan homes set the bar high. Full-height Crittal windows not only allow you to enjoy uninterrupted views of London but flood the rooms with natural light. Coupled with pared-back interiors that look to nature and the neighbourhood's heritage for inspiration, the result is a sanctuary at the heart of the city.





THINK BIG. LIVE BOLD. STAY FOREVER.

Natural materials and a palette inspired by the natural world help The Founding's spacious living areas fit seamlessly into one of London's greenest neighbourhoods. The subtle lighting also enhances the sense of calm in this haven of peace and tranquillity.





YOGA AT SUNRISE



DRINKS AT SUNSET

Yoga on the residents' roof terrace at sunrise.



Residents' roof terrace with a view of Canary Wharf at sunrise.

WATCH LONDON LIGHT UP

Residents' roof terrace with view over the City at sunset.

THE GREAT OUTDOORS

The Founding continues to delight at every level with its generous terraces and outdoor spaces focused on wellbeing. Residents can admire views of London's skyline, rainforest-inspired foliage, practise yoga or simply relax in an array of inviting spaces.



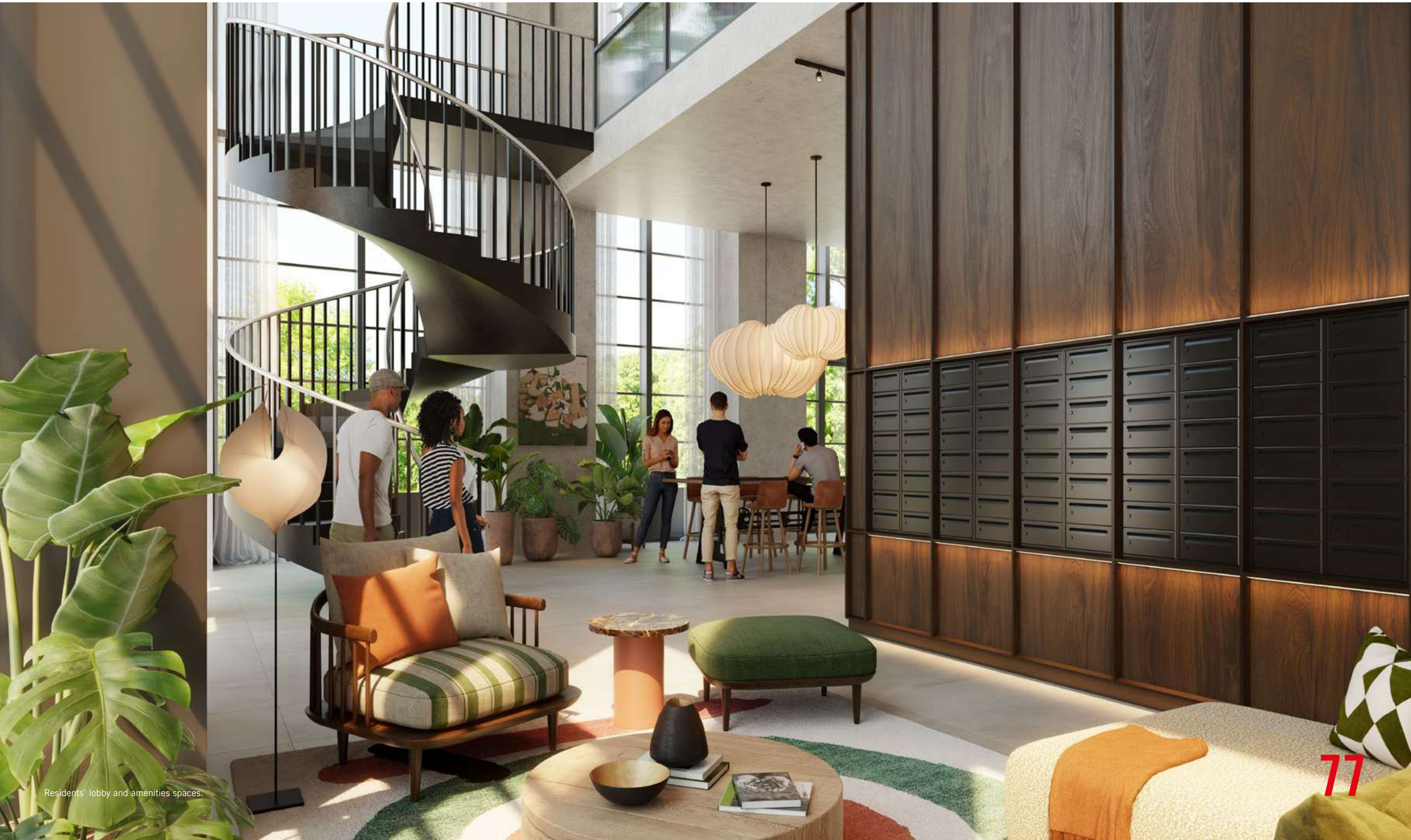
Residents' dining space on the roof terrace.

SPACE FOR EVERY OCCASION

True rejuvenation is about creating a lasting legacy and community. That's where The Founding's shared spaces come in: inviting areas that bring people together. Whether you're socialising or working from home, a range of residents' lounges and beautifully curated spaces will accommodate your every need and occasion.



Residents' dining or workspace.



Residents' lobby and amenities spaces.



Residents' lounge.

Residents' lounge

**MAKE
YOURSELF
AT HOME**

Interior design

CONRAN AND PARTNERS



AN INSPIRING FUTURE

According to Conran and Partners' late founder Sir Terence Conran, "Good design improves people's lives".

A quick look at the internationally renowned architecture and interior design practice's portfolio certainly confirms this. Since being founded by Sir Conran more than 35 years ago, Conran and Partners has delivered an array of award-winning buildings and spaces that endeavour to be progressive and sustainable. Prioritising the needs and desires of users, their projects intend to inspire and connect, and embrace a rich and varied range of cultures, typologies and scales.



The finer details

SPECIFICATION

Kitchens

- Ceaserstone finish concrete style worktops
- Soft close doors
- Recessed downlights
- Feature vertical tiling splashback
- Integrated white goods
 - Samsung dishwasher, hob, microwave, washer/dryer
 - Siemens extractor, fridge/freezer

Bedrooms

- Fitted full height wardrobes (master bedroom only)
- Matt finish metal ironmongery
- Recessed adjustable downlights

Bathrooms and ensuites

- Feature wall and floor tiling
- Duravit sanitaryware
- Baths to selected units
- Brushed matt black tap fittings
- Black framed bath screen
- Thermostatic shower valve
- Wall mounted shower head
- Smoked walnut timber veneer shelving
- Mirror unit with integrated front-facing lighting
- Recessed adjustable downlights

Floors

- European oak engineered timber flooring (living room, dining and kitchen)
- 100% wool carpet (bedrooms)

Ceilings

- Range from 2.6m to 2.8m in coffered ceiling area
- Kitchen and bathroom areas 2.4m

Internal doors

- Solid internal doors
- Brushed stainless steel handles

Entrance and hallway areas

- Oak veneer entrance doors
- Adjustable concealed hinges
- Matt finish ironmongery
- Bespoke entrance door metal number plate
- Matt finish spy hole

Apartment lighting

- LED recessed down lighters to all rooms
- Track mounted lighting within coffered ceiling area of living room

Heating and ventilation

- Underfloor heating and whole house ventilation

Comfort Cooling

- Controllable comfort cooling provided to lounge and kitchen areas in 1, 2 and 3 bedroom apartments

AV and connectivity

- Fibre internet with three providers
- AV points in bedroom and living area
- Video entry intercom
- Smoke and heat detection

Cycle

- Complimentary membership to London cycle hire scheme (for 3 years)
- Secure cycle storage for each apartment, including separate cyclists' courtyard entrance

Car Club

- Car club provision for Masterplan residents

BUILT BY BRITISH LAND

YEAR 1856

British Land was founded

FTSE 100

listed company

£14.1 BILLION

assets under management

21.7 MILLION

sq ft of floor space

£9.6 BILLION

assets owned by British Land

British Land is committed to creating spaces that evolve and grow with the needs of the communities they're created for. Its high-quality, modern and sustainable environments are designed to not only serve the places they're created for, but help them thrive, to connect people and support their wellbeing.

Its three London campuses, Broadgate, Regent's Place and Paddington Central, are the premier office portfolio in London. Canada Water will be the fourth campus to join its portfolio.



Broadgate Circle.

DEVELOPMENT TEAM



Developer

BRITISH LAND

British Land plc owns a portfolio of office-led London campuses and retail destinations, located around the UK. These include Broadgate, London; Meadowhall, Sheffield and Canada Water, London. Our approach towards creating high-quality places for our customers and the community involves bringing together our skills in placemaking, sustainability and technology and responding towards the changing way people use our space. Our places serve local communities, provide opportunities for skills development and employment and promote wellbeing.



Award-winning Architects/Masterplan Architects

ALLIES & MORRISON



Award-winning Landscape Architects

TOWNSHEND LANDSCAPE ARCHITECTS



Award-winning Interior Architects

CONRAN AND PARTNERS



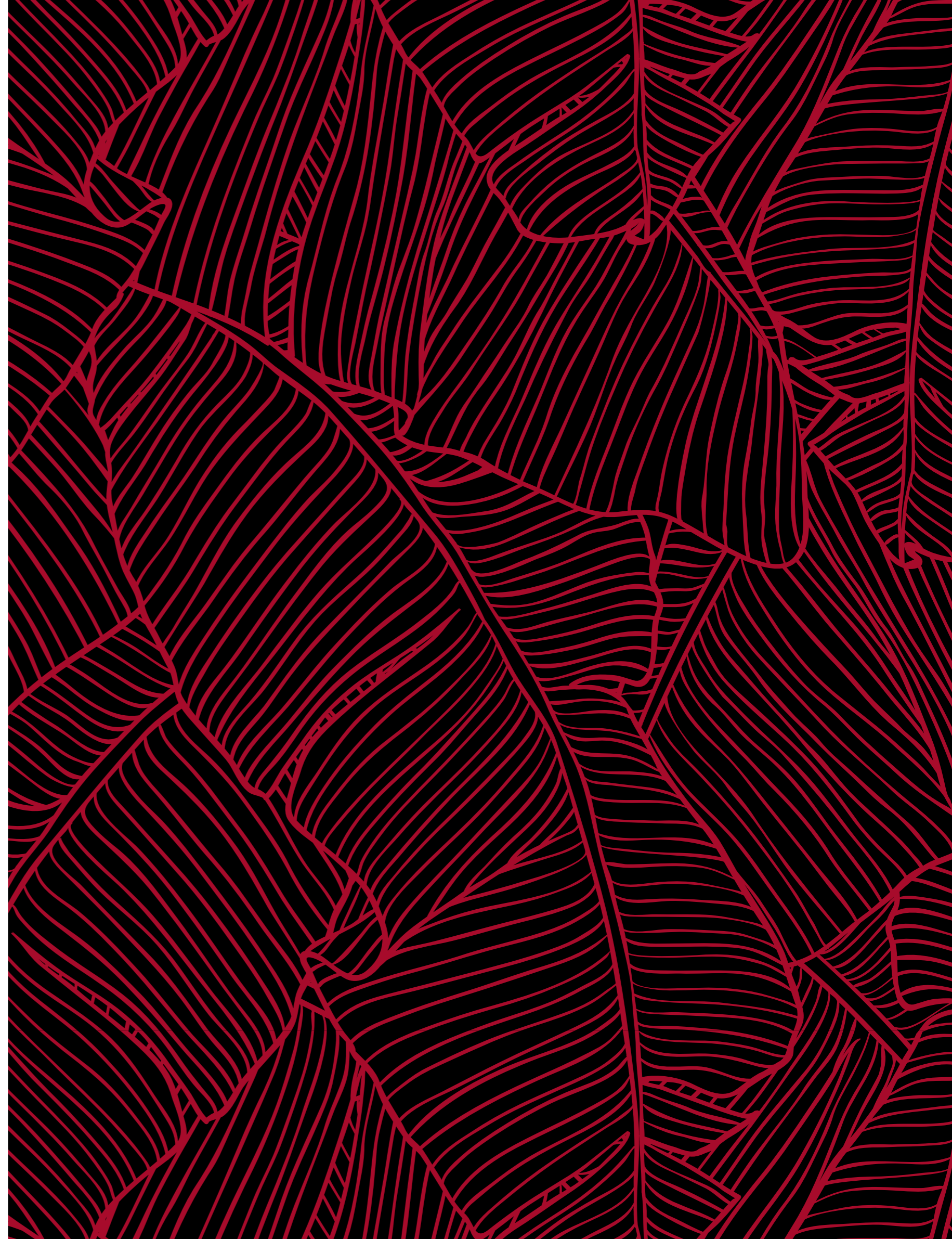
Vendor's Solicitor

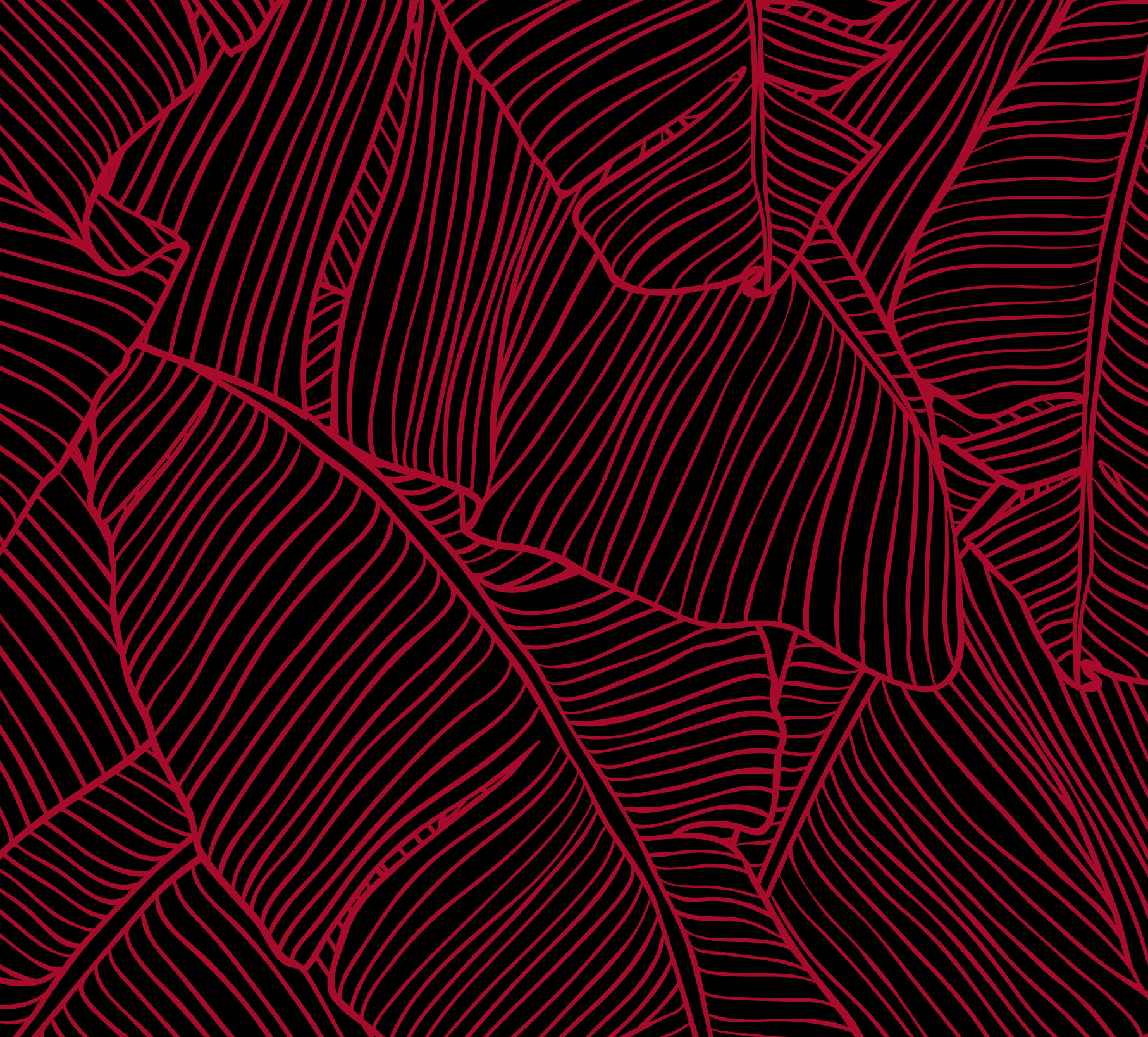
OSBORNE CLARKE LLP

Anticipated completion

AUTUMN 2024

The British Land Company PLC, its group entities, Savills and Jones Lang La Salle (the "Agents") give notice that: These particulars are set out as a general outline only, for the guidance of prospective purchasers. These particulars do not form part of any offer or contract and must not be relied upon as statements or representations of fact. The parties assume no responsibility for any statement that may be made in these particulars. Any areas, measurements or distances are approximate. The text, images and plans are for guidance only and are not necessarily comprehensive. Computer generated images are for indicative purposes only. It should not be assumed that the property has all necessary planning, building regulation or other consents and the parties have not tested any services, equipment or facilities. Purchasers must satisfy themselves by inspection or otherwise. These particulars were prepared from preliminary plans and specifications before the completion of the properties. They may have been changed during construction and final finishes could vary. Prospective purchasers should not rely on this information but must get their solicitor to check the plans and specification attached to their contract. The Agents are not authorised to make or give any representations or warranties in relation to the property either here or elsewhere, either on their own behalf or on behalf of British Land or otherwise. If in doubt, please seek independent professional advice before making a purchase decision.





Developed by:



Canada Water Marketing Suite
Dock Office Courtyard
London SE16 2XU

Visits by appointment only.

Represented by:



For further information, please contact:
homes@canadawater.co.uk

THEFOUNDING.CO.UK